

Archdiocese of Birmingham



St Ambrose Barlow Newsletter

Headteacher: Mrs M Winters

St Ambrose Barlow
Catholic Primary School
841 Shirley Road, Hall Green
Birmingham, B28 9JJ

Tel: 0121 464 2791
enquiry@sab.bham.sch.uk

www.sab.bham.sch.uk

Newsletter No 2

19th October 2020

Dear Parents

I would like to thank all parents for their support in following the procedures that we have put in place this term. This has ensured that we have been able to keep all class bubbles open for the first seven weeks of the term. This could not have happened if everyone had not contributed by considering the safety of everyone in our community. Thank you.

You will find below a reminder of current school procedures:

Please follow the one-way system. Even if you are late to collect your child, please do not walk into school through the exit gate. Please ensure that the adult dropping off and collecting your child/ren from school is from the same household or childcare bubble. (Government Guidance States: 'A childcare bubble is where someone in one household provides informal (unpaid and unregistered) childcare to a child aged 13 or under in another household. For any given childcare bubble, this must always be between the same 2 households. Friends or family who do not live with you and are not part of a support or childcare bubble must not visit your home to help with childcare. Childcare bubbles are to be used to provide childcare only, and not for the purposes of different households mixing where they are otherwise not allowed to do so'.)

When your children are entering and exiting the site they must be at your side at all times. They must not run ahead, as they risk mixing with children from other bubbles. It is vital that we have your full support, to comply with social distancing on and around the school site. We want to keep our whole community safe and ensure that our children's education can continue safely at school. We cannot become complacent; we remain in a very unstable environment and we must work together to keep each other safe.

If you are collecting from the Year 2 and Year 6 point, please keep to the side (alongside the Caretaker's front garden). Your child will walk alongside the opposite side, by the cars to meet you, so they are again are not walking through groups of parents. As you wait for your child, please keep a social distance from other parents.

Year 4 parents - please stand alongside the wall, so that you are not obstructing other parents leaving from the playground. Please move to the left to greet your child and follow the white arrows down the drive. As you wait for your child, please keep a social distance from other parents.

Year 5 parents – please stand to the left as you look at the caretaker's house, to ensure families leaving can keep their distance from you. The children will be instructed to walk to the opposite side rather than walking through the parents waiting. Please walk to the opposite side to meet your child.

If you are collecting children from the front playground (classes – Reception, Year 1 and Year 3), please use the dots and stand to the side, rather than the middle of the playground to social distance from other parents.

Could I remind parents not to stand chatting outside the school gate and to disperse quickly. We want to keep not only children and staff in school safe, but also parents, grandparents and other vulnerable children and adults that are in our family bubbles.

If parents have younger children returning home with them or children with them when collecting, they must hold the children's hands at all times. This is to ensure social distancing at all times within the school site.

Children are washing and sanitising their hands regularly and keeping a social distance when they need to. Could I ask that all children in Key Stage 2 bring in their own bottle of sanitiser to keep in their desk, as this will greatly support procedures put in place in school.

As you are aware ventilation is important for good indoor air quality, considered as part of a larger effort to provide a healthy school environment during the pandemic. We are still keeping some of our windows open to allow for good ventilation. With this in mind, please ensure your children wear extra layers. E.g. an extra T-shirt under their shirt, an extra jumper or cardigan.

Thank you to all those parents who are wearing face masks on the school site. If there is a medical reason why you can't wear a mask, please ensure you keep a distance of 2 metres from other parents and children. Thank you for your continued support in considering others, in order to keep everyone safe.

School closes for the half-term holiday, following the afternoon session on Friday 23rd October and re-opens on Monday 2nd November.

Parking Outside of School

Each year we send reminders asking parents to park courteously when dropping off and collecting their children. I know that the vast majority of parents, park safely and sensibly at all times.

However, unfortunately we have received a complaint about inconsiderate parking. There are daily occurrences, particularly on the corner of Boylestone Road/Shirley Road. The resident has reported their concerns to the police. Please read their concerns.

'Vehicles fully park on the grass verge on the corner of Boyleston Road at the junction with Shirley Road, and proceed to get their children out or into their cars. This involves opening their doors wide across the pavement totally blocking anyone passing. They then proceed to get buggies out, siblings out and un-belt their school child. They seem oblivious to others and we, as pedestrians with our grandchildren, have to go into the road to bypass their obstructive behaviour. When challenged they just apologise but do nothing else. No masks and no chance of social distancing. It is a real bottleneck for cars at this junction with parents parking close to the junction on the road as well. On the other hand children from your school are always polite and respond with a cheery "good morning" when I say "good morning" to them. Congratulations on giving your pupils good manners, perhaps they could educate their parents!'

Please ensure that we maintain a good relationship with our neighbours by parking considerately at all times.

Family Fast Day

Thank you for all your donations so far. To date, our non-school uniform event (2/10/20 - which all our children and staff took part in) has raised £190.00 for CAFOD.

£1 donations are still coming in through our School Money website, so we have decided to extend the online payment option until Thursday 22nd October 2020. Thank you all for your generosity.

Water in School

Please ensure that your child is provided with a clear plastic bottle, labeled with their name, for drinking water in school. At all times throughout the school day children may only drink water.

Reading 5 times a week

It is well proven that children who read regularly, read well, and we know that reading is vital to learning. We have a policy that your child should be reading 5 times a week at home, and that a parent must sign the reading log to say that they have read. This reading log comes to school each day and is checked for a signature. If a child has not read 5 times in that week, then they will have to stay in at break time to read for 10 minutes (and then go outside for 5 minutes play). Surprisingly, this rule tends to stop arguments in the evening about reading, as the children know they will be checked up on in school! A week runs from Friday to Thursday, so it's important a child reads at least once over the weekend (reading Monday, Tuesday, Wednesday, and Thursday night will only be 4 times).

Admission of 4+ year old children in September 2021

If you have a child who will be five years old between 1st September 2021 and 31st August 2022 and wish to apply for a reception place for September 2021, please apply on the following website:

https://www.birmingham.gov.uk/info/20119/school_admissions/1786/apply_for_reception_primary_school The closing date to apply for applications for Reception Class 2021 is 15th January 2021. It is also vitally important that you also complete our school 'Additional Information Form' as part of the admissions process. If you have not already done so, then please call the office. It is important that you apply on time as any applications received after the 15th January 2021 will be classed as late applications and will be processed after the national offer day of 16th April 2021 and late applicants are less likely to be offered a place at any of their preferred schools. This year we will not be allowed to hold an open afternoon as we normally would. Please see the website which contains a wealth of information about school life at St Ambrose Barlow.

Praying the Rosary

The month of October is a traditional time to pray The Rosary: a set of prayers to God, our Lady and the Holy Spirit.

Children have been learning that, after reflecting on a passage of scripture (called a 'mystery'), we say a set of prayers (called a 'decade') including the Our Father, ten Hail Marys' and a Glory Be. We use the beads of the rosary to help us keep count, but fingers can work too! You might like to pray the rosary with your child this October:

Our Father	Hail Mary	Glory Be
Our Father who art in heaven, hallowed be thy name. Thy kingdom come; Thy will be done on earth as it is in heaven. Give us this day our daily bread; and forgive us our trespasses as we forgive those who trespass against us; and lead us not into temptation but deliver us from evil. Amen.	Hail Mary, full of grace. The Lord is with thee. Blessed art thou amongst women and blessed is the fruit of thy womb: Jesus. Holy Mary, Mother of God, pray for us sinners now and at the hour of our death. Amen.	Glory be to the Father and to the Son and to the Holy Spirit. As it was in the beginning, is now and ever shall be, world without end. Amen.

First Holy Communion

Congratulations to the children in Year 4 who made their First Holy Communion over three weeks in October. Each Saturday was a long-awaited wonderful celebration. We were very proud of the children who made it a reverent and spiritual occasion. May I ask you to pray for them. The children all worked extremely hard throughout the programme and a special thank you to the staff and Fr Paul who helped prepare the children. Parents, I ask you to bring your children each week to Mass to receive the Lord in this wonderful Sacrament.

Prayer for a Child's First Holy Communion

Lord Jesus,

Bless the children who are going forth after receiving Holy Communion for the first time.

May this be a further step in a lifelong love of the Eucharist.

Give them a hunger for this sacred food so that they turn to

You for comfort, guidance and wisdom as they grow into full discipleship.

Thank you for their innocence and goodness.

May their hands, extended in anticipation of your Body and Blood,

inspire us all to cherish this sacred Sacrament.

School Building Fund

May I remind you that contributions to the School Building Fund for 2020-2021 are now due. I hope that you feel able to support this initiative in order to maintain our school in good repair so that we can continue to provide a suitable learning environment for our pupils.

Most parents decide to send their children to a Catholic school because they know that their child will be educated in a Catholic environment and because they know that the school will provide an excellent education.

The quality of Catholic schools has also been recognised by the Government and they have granted many of them 'voluntary aided' status. What this means is that although the schools are in the state system, we can retain our traditions and organise the school on the basis of the teachings of the Church. But, in return, we are required by law to raise 10% of the cost of developing and maintaining the school buildings.

So, as a voluntary aided school, if we need to improve the school, or undertake basic repairs or add additional facilities, we need to find 10% of the cost ourselves. There is no choice in the matter. If the money is not raised, the work cannot be undertaken and the Governors therefore have to turn to the families at the school for voluntary donations to the School Building Fund so that we can continue to provide the best possible teaching and learning environment.

At St Ambrose Barlow, we have been blessed with the Catholic primary school facilities that have been developed with the sacrifice, commitment and hard work of past and current families. Through the contribution of families and the generous support of parents to the School Building Fund, we have together been able to provide the resources and facilities that the children now benefit from in our school.

As Governors, we are committed to providing a high standard of learning environment and there is still a lot that we would like to achieve but we do need to continue to finance additional projects and essential maintenance works. There is an ever continuing need to refurbish our existing facilities to meet the requirements of today's education standards and improve the learning environment of the school for the benefit of all the children, staff and parents.

As such we are dependent on the generous voluntary contributions and continued support from the families at St Ambrose Parent and we would like to thank everyone who has contributed in the past and those who have maintained their commitment to contributing to the School Building Fund, you should be proud that your kind contributions have gone a long way to help improve the learning environment of St Ambrose Barlow.

How to contribute

You can make a payment on the 'School Money' website. Parents are asked to contribute £30 per academic year to our 'School Building Fund'.

Parents can choose to either pay:

1 x £30 any time during the academic year

3 x £10 per term (Autumn, Spring and Summer)

4 x £7.50 per half term (Sept-Oct, Nov-Dec, Jan-March and April-July)

Gift Aid

Most of our parents who contribute to our 'School Building Fund' do so under the Gift Aid Scheme. Under this scheme the school can reclaim from the HMRC the basic rate tax you have already paid on your contribution. This increases the value of your contribution at no cost to you. For each £100 that we receive, the school claims back an additional £25!

The Gift Aid declaration form is available here: www.gov.uk/government/publications/charities-gift-aid-declaration-form-for-a-single-donation

Further information on Gift Aid from HMRC is available from: www.hmrc.gov.uk/individuals/giving/gift-aid.htm

The Governors would like to thank you for your continued support.

Extra Funding for St Ambrose Barlow Catholic Primary School

Even if your child is in Reception or Year 6, did you know that our school could receive extra funding called Pupil Premium.

If you receive now or in the future any of the following benefits, please log on to:

www.cloudforedu.org.uk/ofsm/birmingham and complete the online form. Alternatively, please contact the school office who will be able to assist you.

- Income Support
- income-based Jobseeker's Allowance
- income-related Employment and Support Allowance
- support under Part VI of the Immigration and Asylum Act 1999
- the guaranteed element of Pension Credit
- Child Tax Credit (provided you're not also entitled to Working Tax Credit and have an annual gross income of no more than £16,190)
- Working Tax Credit run-on - paid for 4 weeks after you stop qualifying for Working Tax Credit
- Universal Credit - if you apply on or after 1 April 2018 your household income must be less than £7,400 a year (after tax and not including any benefits you get)

All applications will receive an immediate response. If your application is successful, the school office will contact you direct.

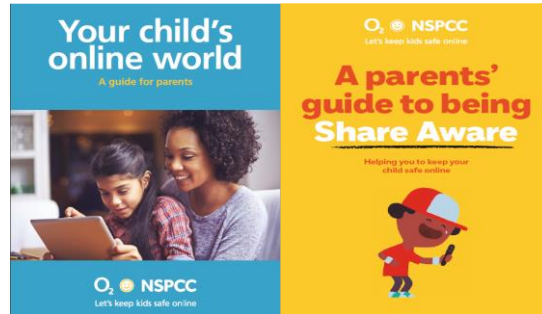
Please note – Only one application per child needs to be completed. Upon, the onetime application being completed the process will automatically run daily checks throughout your child's education at St Ambrose Barlow. If your personal circumstances change during this time, the system will automatically pick this up and immediately notify both yourself and the school.

Dinner Money

If your child does not receive a free school meal but you have requested and been accepted onto the school dinner programme. As per the parental agreement that you signed, please ensure payments of £2.40 (Pizza Friday) £12.00 (per week) is paid in advance on the School Money website. Parents will be asked to provide a healthy packed lunch from home should payments be in arrears of more than one week and dinners will not be re-instated until the account is paid in full.

Online safety

The NSPCC have teamed up with O2 to help parents keep children safe when they're using the internet, social networks, apps, games and more. Please have a look on the website below to ensure we keep our children safe online.



'The internet is amazing. Children can play, learn, create and connect - opening up a whole world of exciting possibilities. But with the digital world changing all the time, how can you make sure your child's staying safe? That's where we come in. Whether you're an online expert or you're not sure where to start, our tools and advice will help you keep your child safe.'

<https://www.nspcc.org.uk/preventing-abuse/keeping-children-safe/online-safety/>

O2 NSPCC Online Safety Helpline on 0808 800 5002

Thank you for your continued support.

Yours sincerely

Mrs M Winters
Headteacher

The Local Authority have also asked us to share the following information with you regarding the current alert level in Birmingham.

VERY HIGH
HIGH
MEDIUM

HM Government | NHS

LOCAL COVID ALERT LEVEL

HIGH

Social Contact 1 household / bubble indoors. Rule of six outdoors.		Weddings and Funerals Up to 15 guests for weddings and up to 30 guests for funerals, 15 for receptions, wakes and related ceremonies.		Overnight Stays Overnight stays permitted subject to social contact rules.		Working from home guidance Work from home where possible.	
Shopping and Retail Open.		Leisure and gyms Open.		Hospitality Open with some restrictions including 10pm closing time and table-service only.		Entertainment and tourist attractions Open, except nightclubs and adult entertainment.	
Education Schools, FE colleges open. Universities must reflect wider restrictions.		Healthcare Services Open.		Residential Care Closed to external visitors other than in exceptional circumstances.		Travel and Transport May continue to travel to open venues, but reduce number of journeys where possible. Avoid travel into Local COVID Alert Level Very High areas where possible.	
Sporting Activity Organised sport / licensed physical activity allowed in outdoor settings. Indoor organised sport must follow social contact rules (other than youth or disabled sport).		Worship Open, subject to social contact rules.		Childcare Registered and wraparound childcare. Supervised activities permitted in private homes. Children's groups permitted. Childcare bubbles for under 14s.		Youth Clubs and Activities Permitted.	

There are three simple actions we must all do to keep on protecting each other:

- Wash hands** keep washing your hands regularly
- Cover face** wear a face covering in enclosed spaces
- Make space** stay at least 2 metres apart - or 1 metre with a face covering or other precautions

For more information and detailed guidance visit:
gov.uk/coronavirus